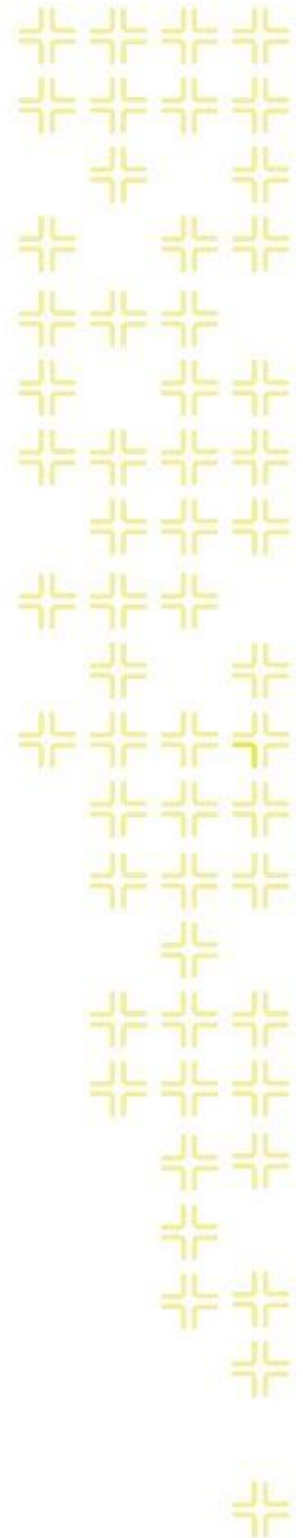




TRAINING GUIDE

The Future of ArcGIS Pro with Lucity



The Future of ArcGIS Pro with Lucy

In this session, we'll introduce you to the new Lucy extension with ArcGIS Pro.

Table of Contents

- Overview 2
 - Highlights for version 2016r2..... 2
 - Requirements 2
 - Installation 2
 - Setup/Configuration 3
 - Logon Process 6
- Lucy Relates 7
 - View Record(s) in Lucy Web. 8
 - Create a Lucy Request 9
 - Create a Lucy Work Order 10
 - Create a Lucy PM/Work Template 11
 - Create a Lucy Inspection 12
 - Lucy Settings..... 13

Overview

Highlights for version 2016r2

- View relationship record counts for selected asset(s).
- Open related record(s) in Lucity web.
- Create request(s) against selected asset(s).
- Create work order(s) against selected asset(s).
- Create pm/work template(s) against selected asset(s).
- Create inspection(s) against selected asset(s).

Requirements

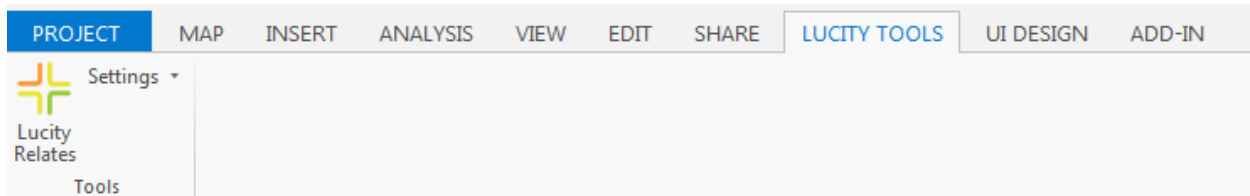
- ArcGIS Pro 1.2+
- Lucity Internal REST API must be installed and running
- Lucity Internal Identity Server API must be installed and running
- Note: With this initial release at 16r2 no additional Lucity licensing is needed to use the Lucity extension in ArcGIS Pro. This will likely not be the case in a future release and some sort of Lucity license would be required to use the Lucity extension in ArcGIS Pro.

Installation

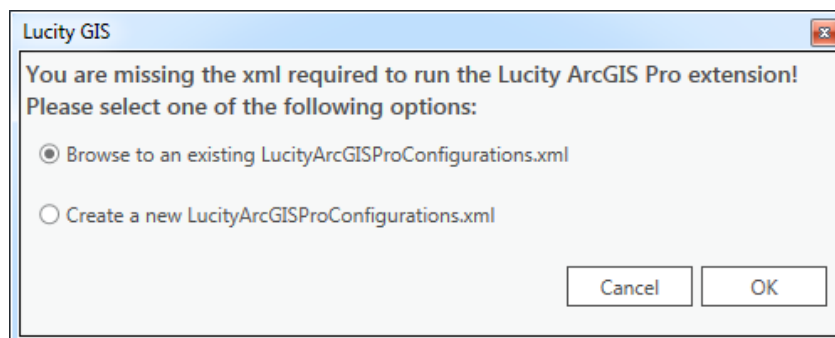
- The extension is provided in the format of an Esri add-in (LucityArcGISPro.esriAddInX)
- The Lucity 16r2 workstation install will copy the .esriAddInX file to the Lucity desktop bin directory. The 16r2 workstation install then determines if the workstation has ArcGIS Pro installed by checking the registry for HKLM>SOFTWARE>Esri>ArcGISPro. If that directory exists, then it will attempt to register the add-in with ArcGIS Pro.
- The add-in can also be manually installed. A download of the LucityArcGISPro.esriAddInX can be obtained at ArcGIS Pro 1.2+. Simply double-clicking the add-in file will register the add-in with ArcGIS Pro.
- Lucity Internal REST API must be installed and running
- Lucity Internal Identity Server API must be installed and running

Setup/Configuration

When the Lucy ArcGIS Pro add-in is registered with ArcGIS Pro, a new Lucy Tools menu item will be added to the ArcGIS Pro ribbon. The Lucy Tools menu will contain two tools: Lucy Relates and Settings.



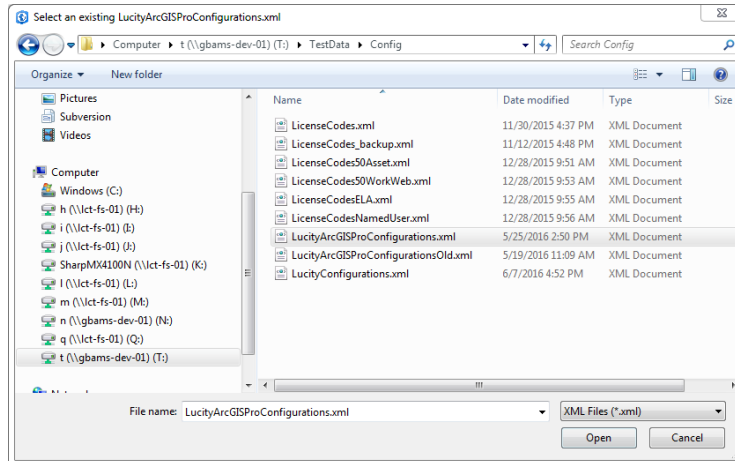
- The Lucy ArcGIS Pro extension doesn't require any Lucy workstation component to be installed, the integration with Lucy is done via the Lucy Internal REST API. Therefore, before the tools provided with the Lucy ArcGIS Pro extension can be used, you must perform some initial configuration so the extension knows the location of the Lucy Internal REST API.
 - When you attempt to use one of the Lucy ArcGIS Pro tools, the Lucy extension checks to see if it has been previously configured for use. If not, the following prompt will be displayed:



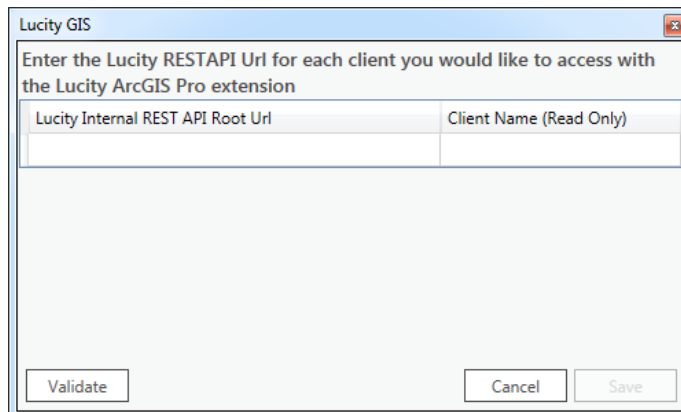
- Note: Each time the Lucy ArcGIS Pro extension initializes it looks for a LUCITY_PROCONFIGDIR registry key in HKEY_CURRENT_USER>Software>Lucy>CurrentVersion. This key contains the path to where the LucyArcGISProConfigurations.xml resides. If the key isn't found or there isn't an .xml at that location then it will prompt the user to configure ArcGIS Pro for first time use.
- The Lucy ArcGIS Pro extension requires a LucyArcGISProConfigurations.xml that contains information regarding the Lucy clients and their Internal REST API root urls. An example of the contents of the .xml is:

```
LucyArcGISProConfigurations.xml
1 <?xml version="1.0" encoding="utf-8"?>
2 <LucyArcGISProConfigurations xmlns:xsd="http://www.w3.org/2001/XMLSchema" xmlns:xsi="http://www.w3.org/2001/XMLSchema-instance">
3   <Configurations>
4     <Configuration>
5       <ClientName>Master SQL Server Development</ClientName>
6       <InternalRESTAPIRootUrl>http://localhost:51596</InternalRESTAPIRootUrl>
7     </Configuration>
8     <Configuration>
9       <ClientName>Replaced Nightly SQL Server</ClientName>
10      <InternalRESTAPIRootUrl>http://lct-w2008r2-01/NightlyWebInternalRESTAPI/</InternalRESTAPIRootUrl>
11    </Configuration>
12  </Configurations>
13 </LucyArcGISProConfigurations>
```

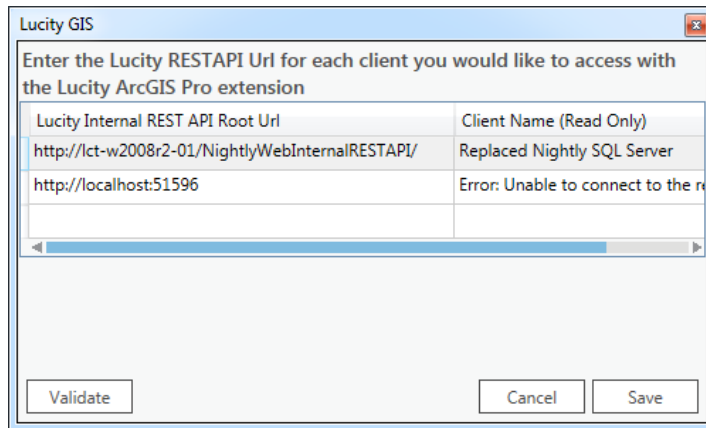
- There are two options: 1) Browse to an existing .xml or 2) create a new one. Ideally, an organization could just create one `LucityArcGISProConfigurations.xml`, place it on a network share, and configure all end-users to use that single .xml. Alternatively, each user could create their own .xml and have it saved locally.
 - Browse to an existing `LucityArcGISProConfiguration.xml`- If you select this option an open dialog will appear prompt the user to select the existing .xml.



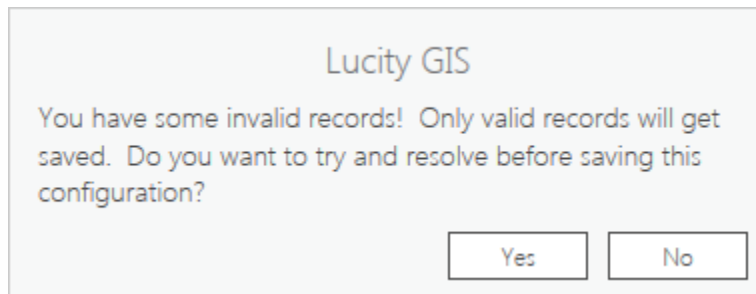
- Create a new `LucityArcGISProCofnigurations.xml`- This option will prompt the user with the following dialog for input regarding their Lucity Internal REST API(s).



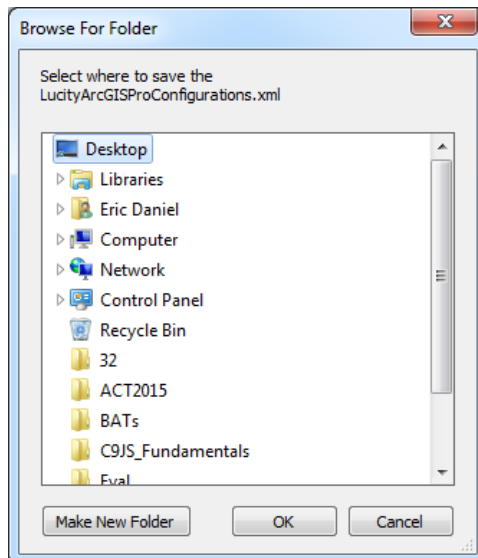
1. Enter the root url to the Lucity Internal REST API for each client you wish to have work with the Lucity ArcGIS Pro extension.
2. Validate. You must validate the configuration before saving. This will attempt to connect to the Internal REST API using the url provided. If successful, the Client Name field will be populated with the associated name; otherwise, it will be populated with an error message.



3. Save. Once you have configured each desired client and validated, you need to save which will create the .xml file. If you attempt to save when there are invalid records you will receive the following warning:

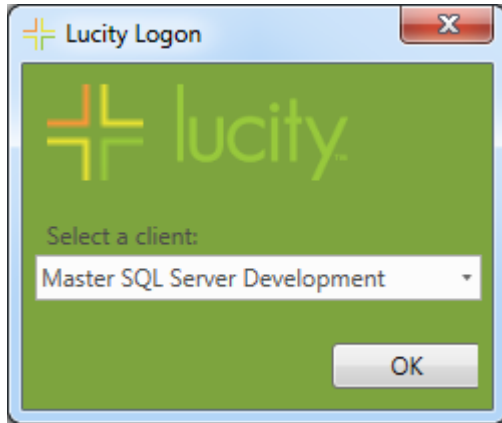


4. Choose location. The following dialog will appear prompting for the location to where you wish to save the newly created LucyArcGISProConfigurations.xml. Note: If you wish to share the .xml then you would likely want to save it to a shared network location where other users can access it.

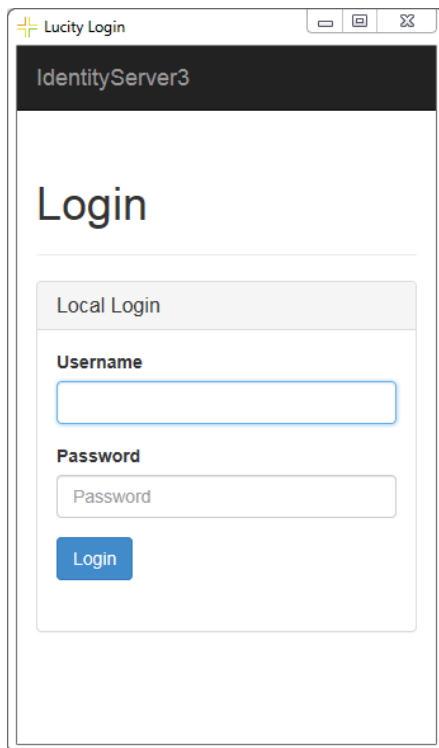


Logon Process

For each ArcGIS Pro session, you will be prompted to logon the first time a Lucy ArcGIS Pro tool is used. If you have more than one Lucy client configured for use, you will receive the following prompt to select which Lucy client to log into.

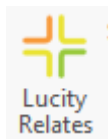


The Lucy Identity Server is required for logging into the Lucy Internal REST API. The following prompt will appear asking for the user's Lucy credentials:

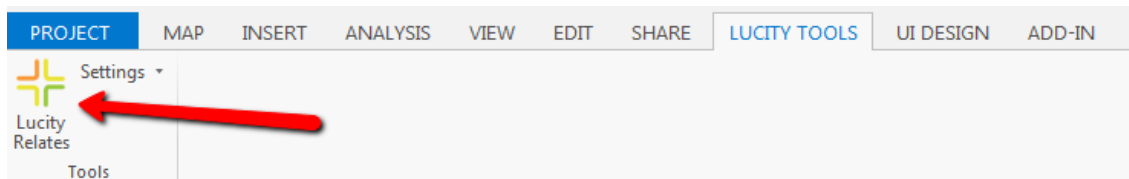


Once logged in, the user can begin using the Lucy ArcGIS Pro tools.

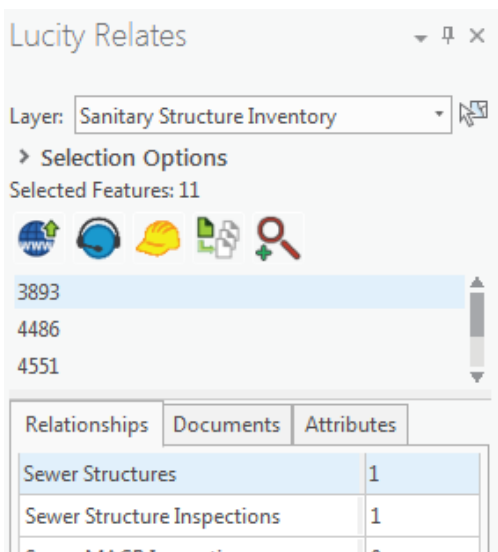
Lucity Relates




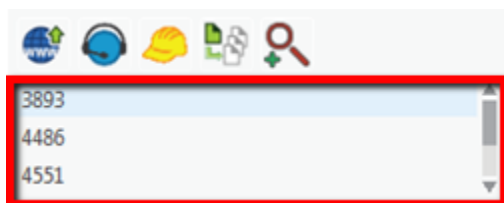
Lucity Relates is the main tool available with this initial release of the Lucity ArcGIS Pro extension. This tool is used to view module relationships; open related records in Lucity web, and create requests, work orders, pms, and inspections.




- When clicked, this tool will open a dockable window similar to the following:

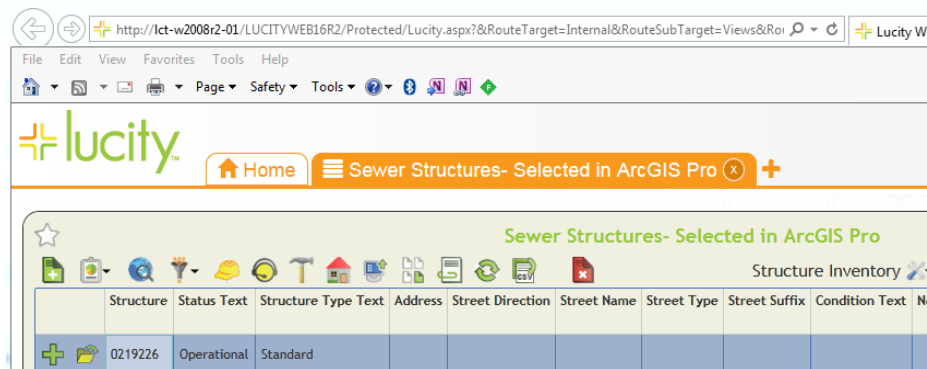
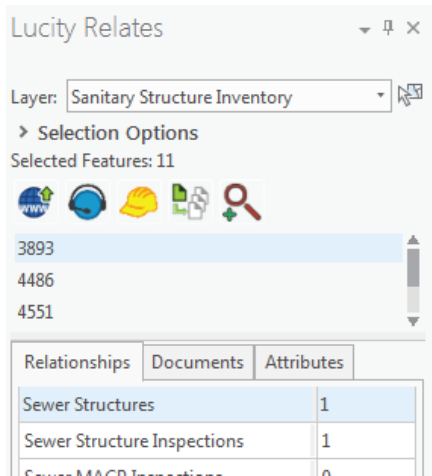


- Layer: **Layer:** This is a drop down list of all layers in the map that are linked to Lucity.
-  **Selection Tool:** This changes the active tool to a selection tool, allowing the user to select features from the active layer (the active layer is the one specified in the Layer dropdown).
- **Selected features grid:** This is a list of the selected features for the currently selected layer. Selecting one or more of the records in this list will enable the Lucity tools.




View Record(s) in Lucy Web.

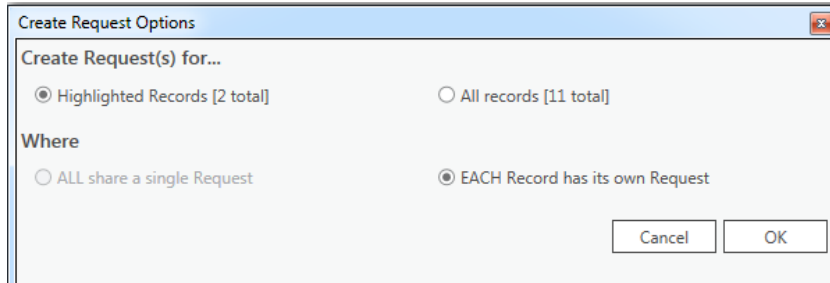
-  This tool will only be enabled if one or more features are highlighted in the selected features grid. This tool will open the module selected on the relationships tab.



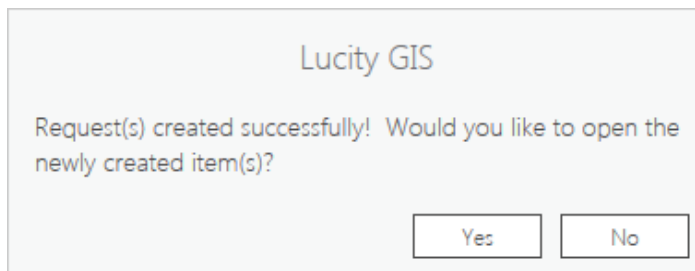
Notes: _____

Create a Lucity Request

-  This tool will create a request (or multiple) using the highlighted feature(s) in the list. When clicked a prompt similar to the following will appear:




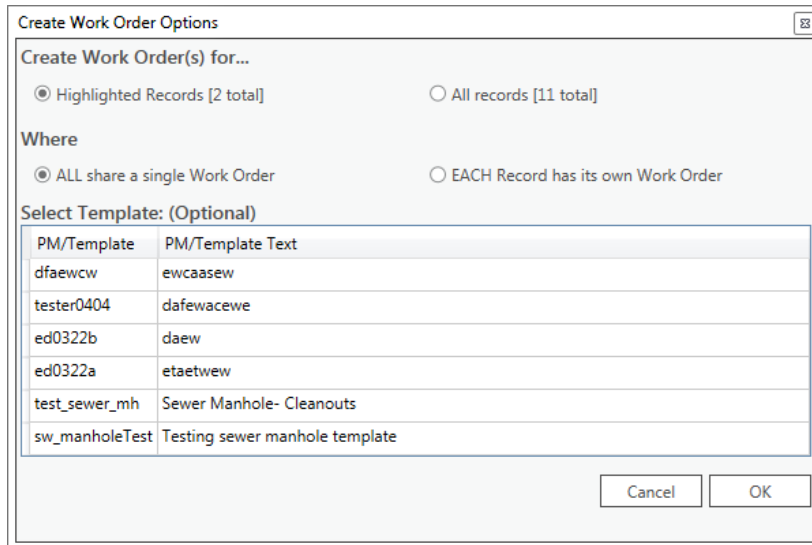
- Specify the desired options and press OK. If successful, a prompt similar to the following will appear:



Notes: _____

Create a Lucy Work Order

-  This tool will create a work order (or multiple) using the highlighted feature(s) in the list. When clicked you will receive a prompt similar to the following:



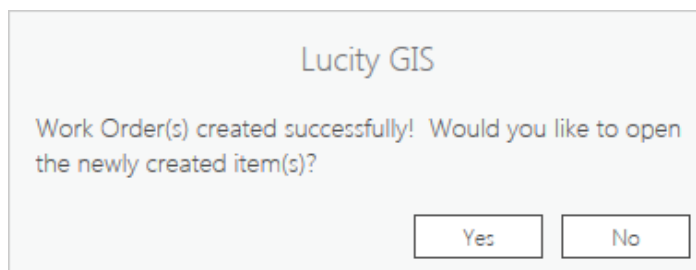
Highlighted Records [2 total]
 All records [11 total]

Where
 ALL share a single Work Order
 EACH Record has its own Work Order

Select Template: (Optional)

PM/Template	PM/Template Text
dfaewcw	ewcaasew
tester0404	dafewacewe
ed0322b	daew
ed0322a	etaetwew
test_sewer_mh	Sewer Manhole- Cleanouts
sw_manholeTest	Testing sewer manhole template

- Select an option to create a work order for just the highlighted record(s) or all records.
- Select an option to add all assets to a single work order or to create a separate work order for each asset.
- (Optional) Select an existing PM Template (list based upon the asset type) that should be used when creating the work order.
- After specifying the desired options press OK. If successful, a prompt similar to the following will appear:




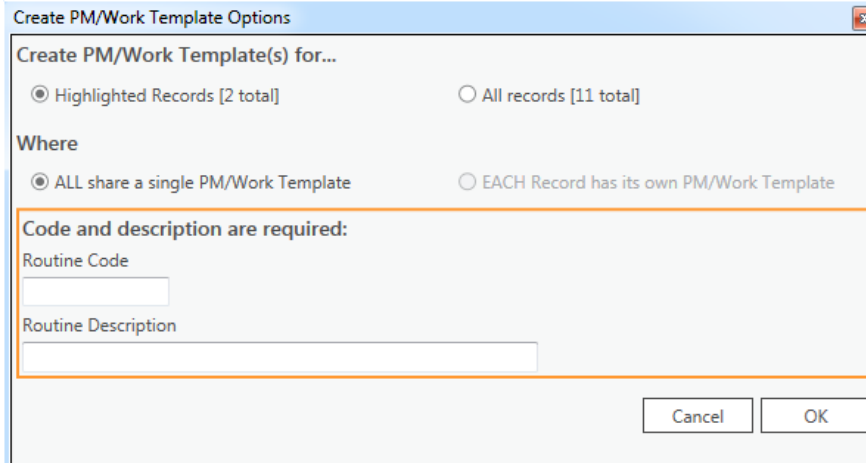
Lucy GIS

Work Order(s) created successfully! Would you like to open the newly created item(s)?

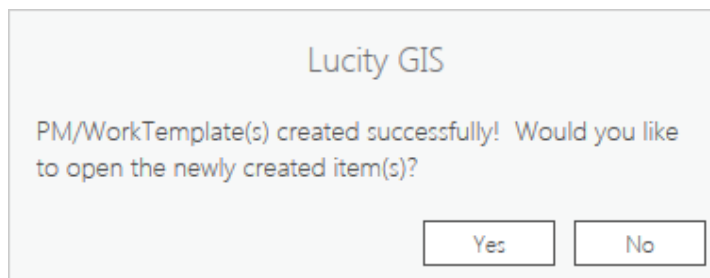
Notes: _____

Create a Lucity PM/Work Template

-  This tool will create a PM/Work Template (or multiple) using the highlighted feature(s) in the list. When clicked you will receive a prompt similar to the following:



- Select an option to create a pm/work template for just the highlighted record(s) or all records.
- Enter a Routine Code and a Routine Description. These are required, and the Routine Code must be unique.
- After specifying the desired options press OK. If successful, a prompt similar to the following will appear:

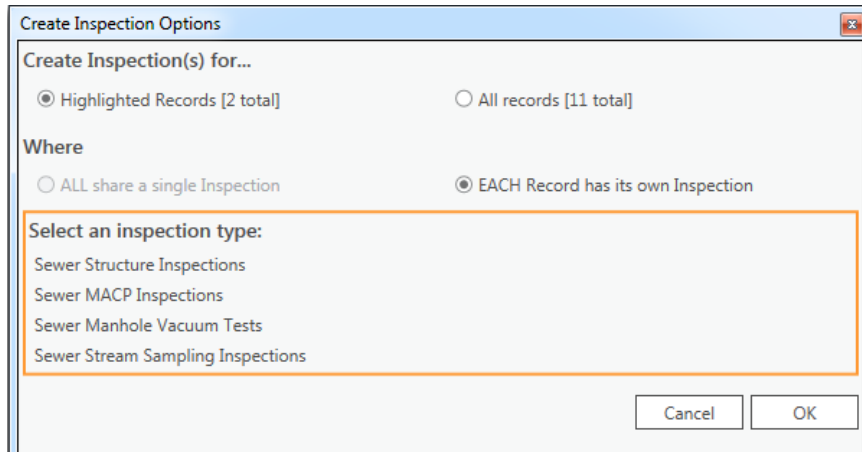


Notes: _____

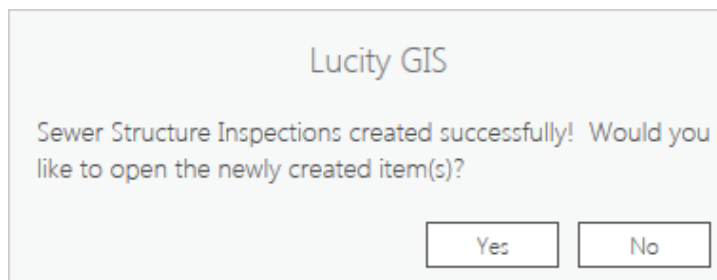
Create a Lucity Inspection



This tool will create an inspection (or multiple) using the highlighted feature(s) in the list. When clicked you will receive a prompt similar to the following:

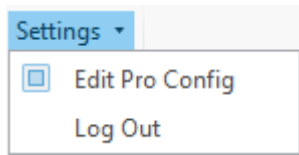


- Select an option to create the inspection for just the highlighted record(s) or all records.
- Select an inspection type. The list of inspection types are based upon the asset type. Note: Some asset types may have only one inspection type and some may have none.
- After specifying the desired options press OK. If successful, a prompt similar to the following will appear:

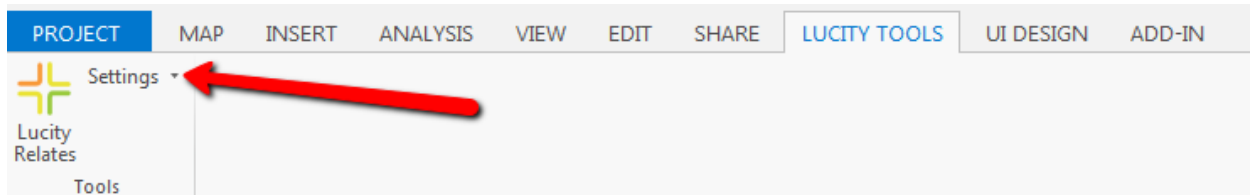


Notes: _____

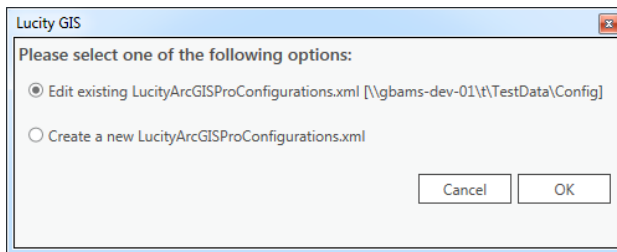
Lucy Settings



There are two main tools currently under Lucy Settings: Edit Pro Config and Log Out.



- **Edit Pro Config.** This tool lets you modify the currently configured `LucyArcGISProConfigurations.xml`, or you use this tool to create a new `.xml`. When clicked, a prompt similar to the following will appear:



- Select if you wish to edit the existing `.xml` or create a new one and click OK.
- **Log Out.** This tool will log the user out of the Lucy Internal REST API. This is useful if you were looking to switch Lucy clients without closing completely out of ArcGIS Pro.

Notes: _____

