



 **lucity**TM

ACT 2014

Lucity FOG Implementation

- What is the problem?
- What can we do about it?
- Pick a solution
- Plan the implementation
- Start building

FOG Program Overview

- Prevent fat, oils, grease from entering collection system (cue AV)
- Two field inspectors for ~200+ facilities
- Each facility inspected annually
- Violations require corrective action
- District bills for inspections

Problems with paper / XLS

- Performance –snail mail pace
- Info - duplication // loss // hard to summarize
- Expensive use of valuable staff time
- Control – hard to audit/manage
- Efficient? Probably not
- Secure? Probably not

The Solution: Lucity FOG

- Convert facility management from spreadsheets to FOG facility
- Convert facility inspections from paper form to FOG inspection
- Convert inspection billing from spreadsheets to FOG/EDEN data interchange

Where to start?

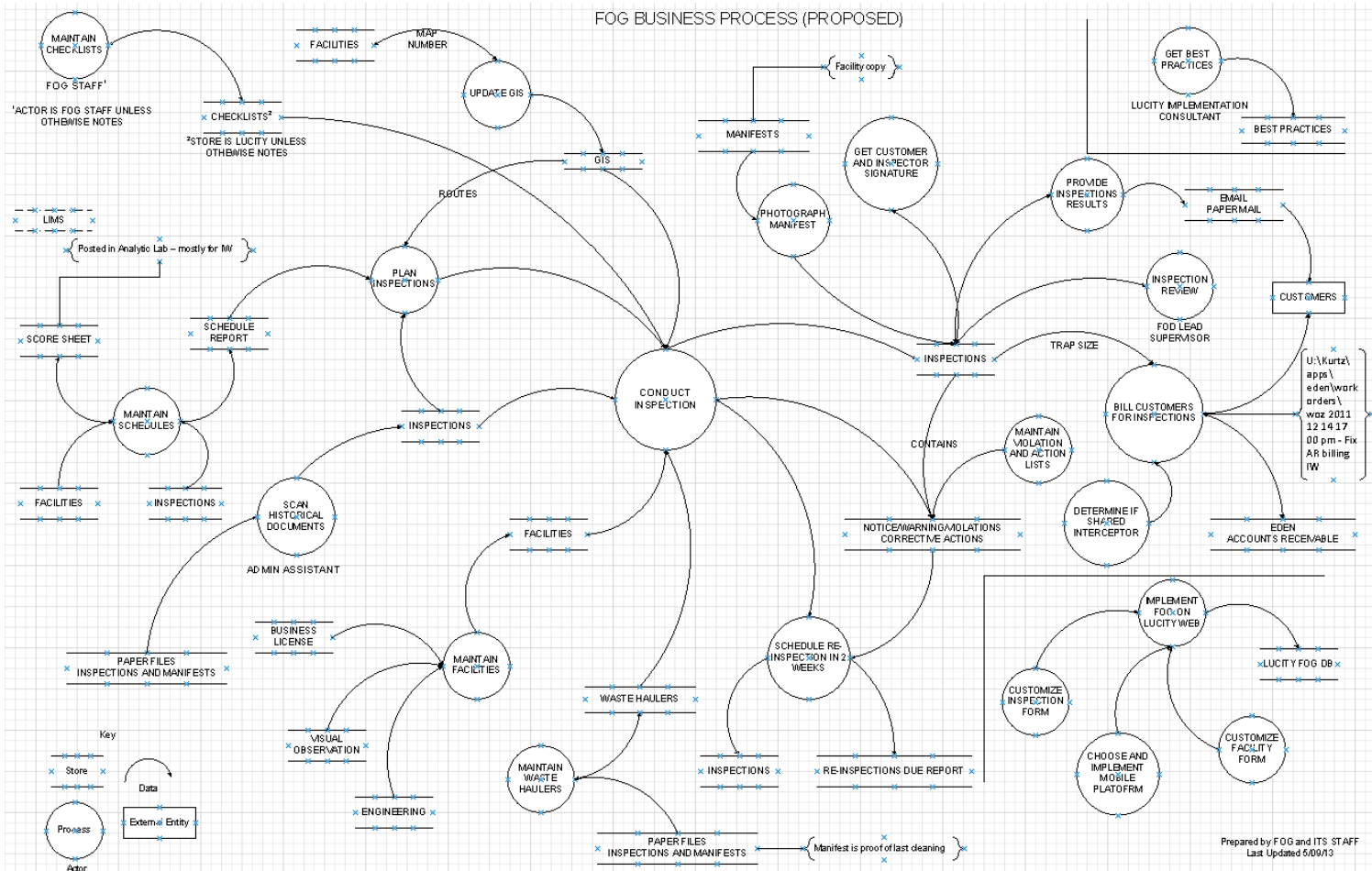
- Analyze existing forms
- Break down existing business process
- Interview stakeholders to gather new requirements
- Determine FOG data elements
- Design Lucity FOG dialogues/forms/reports
- Build/Test/Implement

It is just a FOG inspection

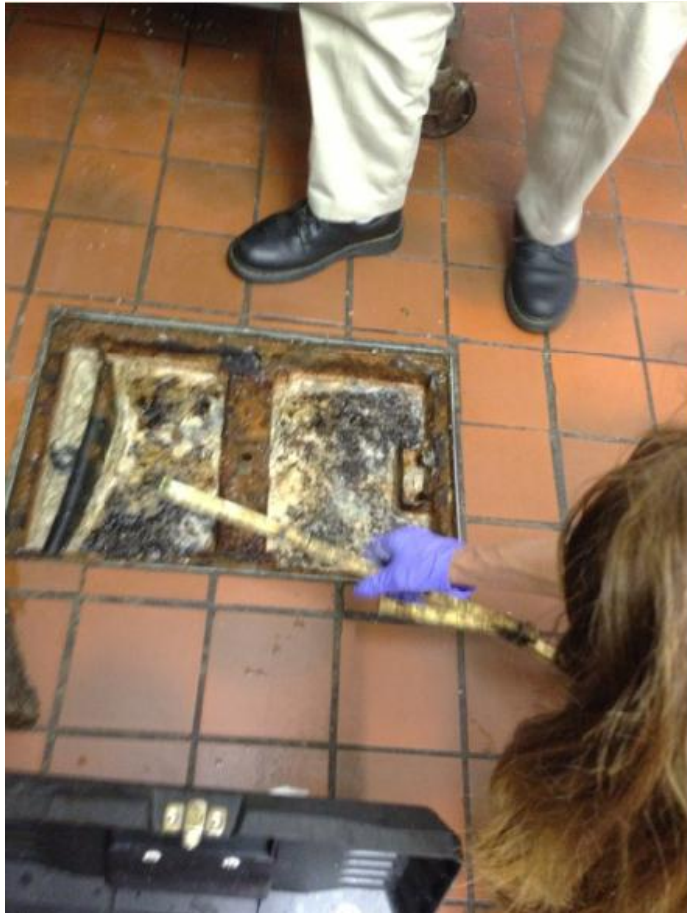
- How hard can that be?
- Interview stakeholders

7/16/13 ①
8:00 ✓ JUDY - REV FOG, INPL
PVT KEY + NM OF PARENT
FACILITE REL W/TO EA
✓ CHLW
✓ RUNS QUERY TO SAY
ADD ALL PROP MGMT
COMP'D AS 200L
TO USE 2 100L
✓ ADD "WHAT TO DO W YLW
CRS" USER1 COMBO TO
SP TASK LIST
PARENT REL POINTS TO CHLW
✓ THEN CONTACT REL

PMO Business Process Blueprint



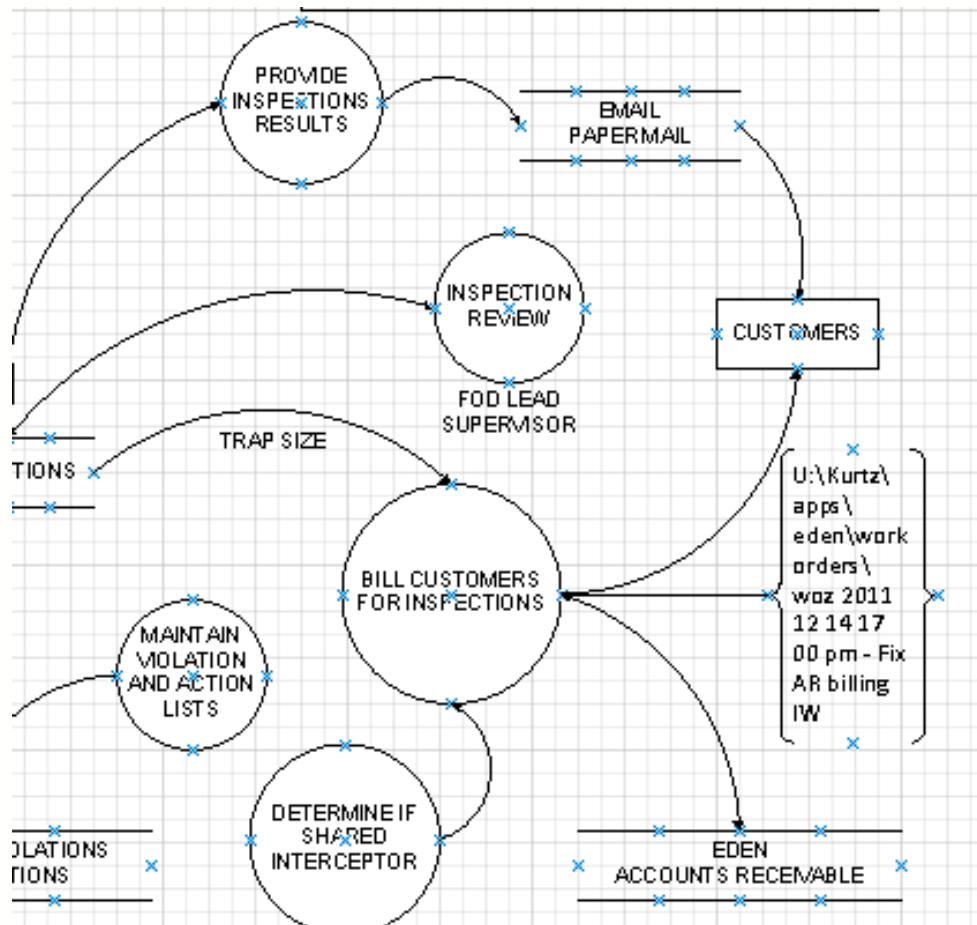
Stay close to the customer



- but not too close

Focus on billing

Bill for inspections



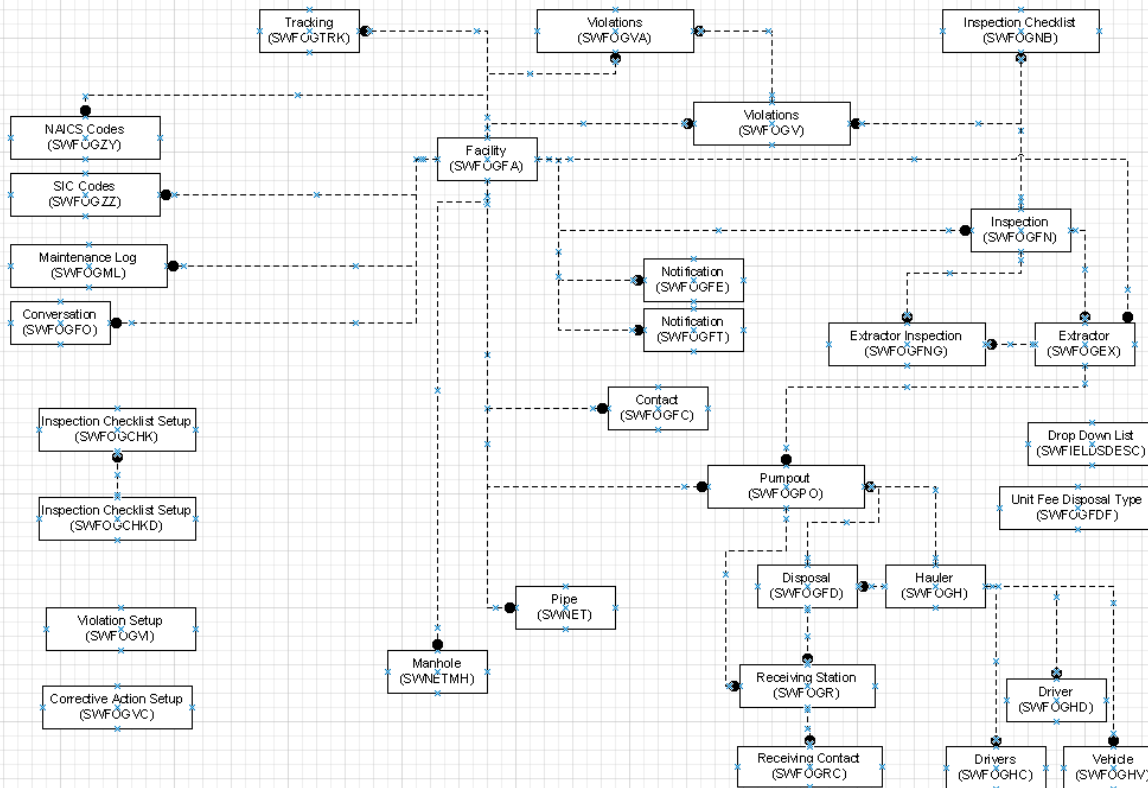
Lucity FOG DB tables

Data Tables			
TableName	Description		
→ SWFOGRC	Sewer FOG Receiving Facility Contacts	→ 4	SWFOGCHK Sewer FOG Inspection Checklist Setup
→ SWFOGTRK	SWFOGFA tracking table	→ 5	SWFOGCHKD Sewer FOG Inspection Checklist Detail Setup
→ SWFOGV	Sewer FOG Facility Violations	→ 6	SWFOGEX Sewer FOG Extractor Info
→ SWFOGVA	Sewer FOG Facility Violations	→ 7	SWFOGFA Sewer FOG Facilities
→ SWFOGVC	FOG Violations Corrective Action Setup Table	→ 8	SWFOGFC FOG Facility Contacts
→ SWFOGVI	FOG Violations Setup Table	→ 9	SWFOGFD Sewer FOG Disposal to Receiving Station
→ SWFOGZY	Sewer FOG Facility NAICS Codes	→ 10	SWFOGDFD Sewer FOG Unit Fee Disposal Type
→ SWFOGZZ	Sewer FOG Facility SIC Codes	→ 11	SWFOGFE Sewer FOG Facility Notifications
		→ 12	SWFOGFN Sewer FOG Inspection
		→ 13	SWFOGFNB Sewer FOG Inspection Checklist
		→ 14	SWFOGFNG Sewer FOG Extractor Inspections
		→ 15	SWFOGFO FOG Facility Conversations
		→ 16	SWFOGFT Sewer FOG Facility Notifications
		→ 17	SWFOGH Sewer FOG Haulers
		→ 18	SWFOGHC Sewer FOG Hauler Drivers
		→ 19	SWFOGHD Sewer FOG Hauler Drivers
		→ 20	SWFOGHV Sewer FOG Hauler Vehicles
		→ 21	SWFOGML Sewer FOG Facility Maintenance Log Info
		→ 22	SWFOGPO Sewer FOG PumpOuts
		→ 23	SWFOGR Sewer FOG Receiving Station

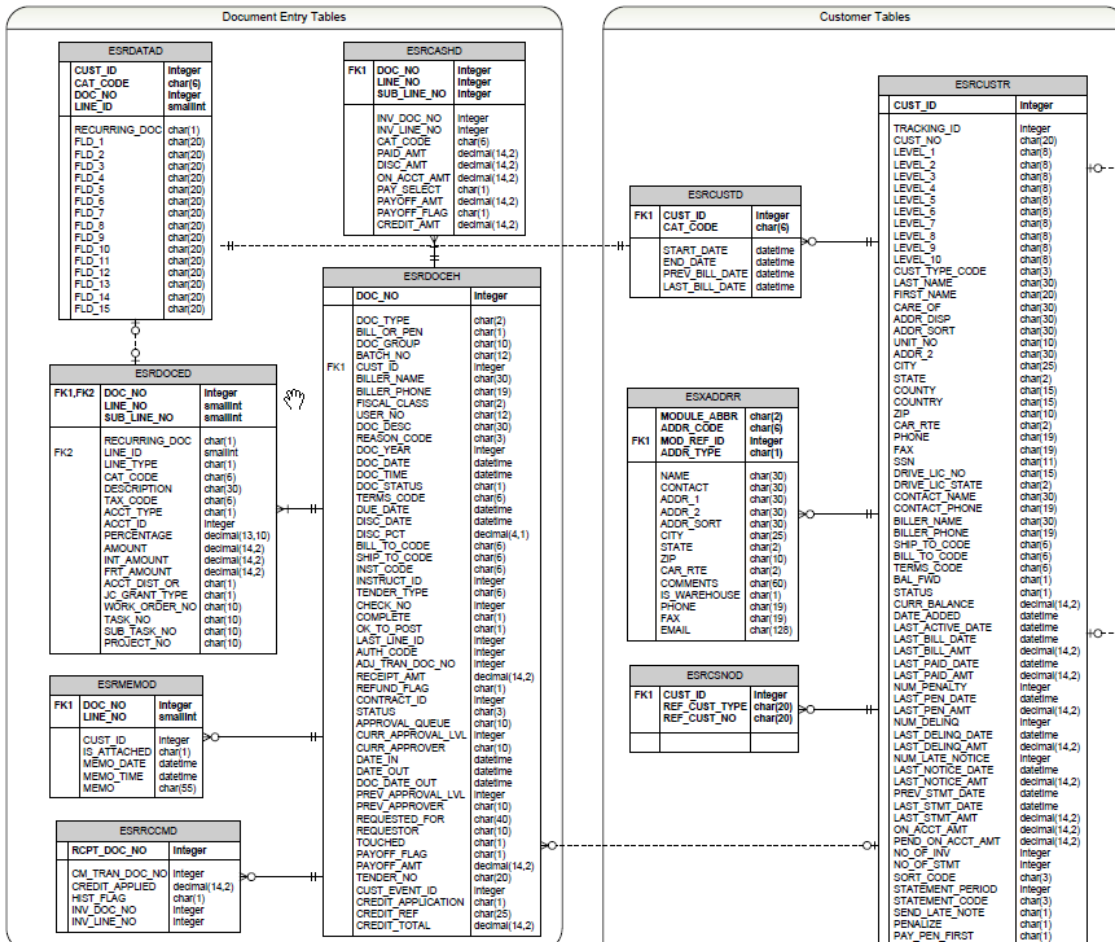
Arrow means that the table was incorporated into the er diagram

FOG Entity Relationship Diagram

LUCIFY FOG MODULE
ENTITY RELATIONSHIP DIAGRAM



EDEN Accounts Receivable Entity Relationship Diagram



Detailed Design phase

- Work in progress [here](#)

Summary

- Veni, Vidi, Vici – not really
- Questions?
- Similar issues at your agency?